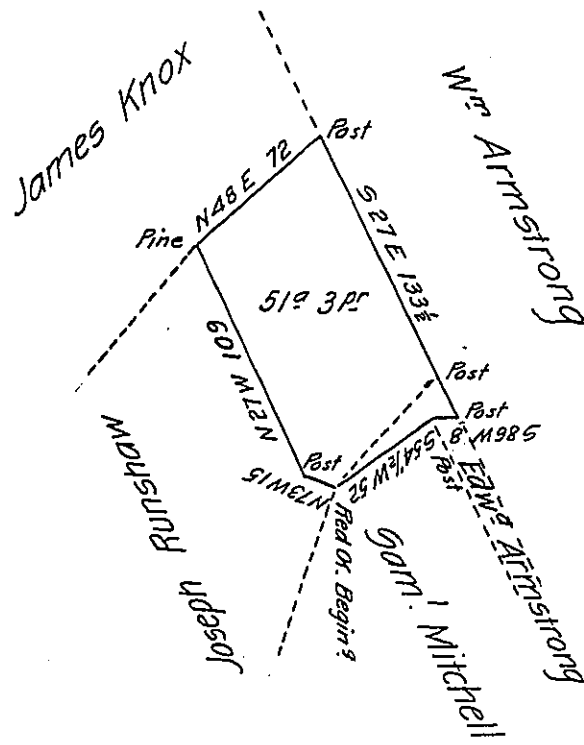


Course & Distance of Addition

Begin at Red Cr.
 N 42 1/2 E 63 a post
 S 27 E 17 1/2 post
 S 86 W 8 post
 S 54 1/2 W 52 Red Cr.



Draught of a tract of land Situate in Fermanagh township (formerly Cumberland) now Mifflin County. Survey^d October 20th 1786 said to contain 46 Acres and the allowance &c. In pursuance of a Warrant for 50 Acres granted to Hugh McElroy dated the 28th day of February 1786.

Resurvey^d the 26th day of June 1805 and appears to contain Fifty one Acres and 3 perches and the allowance of Six Pr. Cent for roads &c. Including an addition of Two acres and 65 perches &c. shewn to the south of the dotted thro the above Draught. Made pursuant to an order of the Board of Property granted to Andrew Mitchell dated the 16th day of February 1803 for a Resurvey on the aforesaid Warrant.

At William Harris D.S.

To Samuel Cochran, Esquire }
 Surv^r Gen^l of Pennsylvania }

IN TESTIMONY that the above is a copy of the original remaining on file in the Department of Internal Affairs of Pennsylvania, made conformably to an Act of Assembly approved the 16th day of February, 1833, I have hereunto set my Hand and caused the Seal of said Department to be affixed at Harrisburg, this fourteenth day of September 1903.

John P. Brown
 Secretary of Internal Affairs.